



Enabling Audio over HDMI in Windows Vista

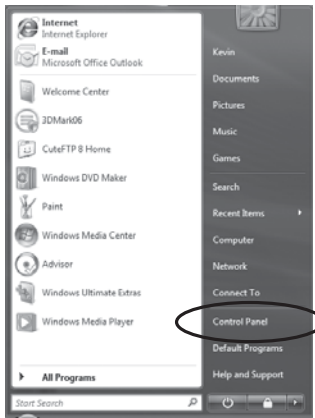
Please read this notice in its entirety if you intend to install your new Sapphire **HD2400 or HD2600 series** graphics adapter into a computer running **Windows Vista** as the operating system.

Part of the feature set of your new Sapphire graphics board is that it has an HD Audio Controller built into the board to allow you to easily and seamlessly output both video and audio via an HDMI output using the Active DVI-HDMI converter which may have been included in the box.

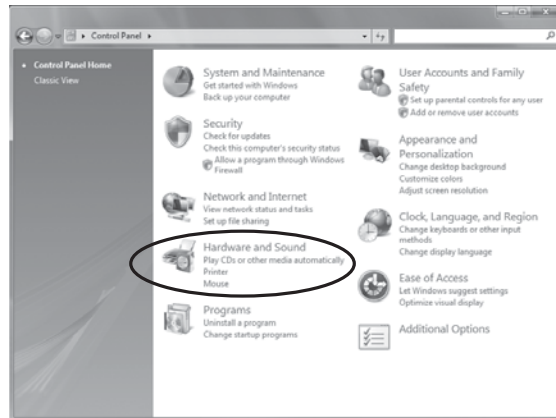
For this reason, part of the driver installation routine also installs the appropriate driver for the HD Audio Controller. The behaviour of the installation of this driver **does not** automatically set the default audio device to be the HD Audio Controller on the graphics board. Consequently, audio will still be routed to your existing speakers.

If you intend to use the HDMI output as your primary output and want the audio routed along the HDMI cable then you will need to change the default audio device from the Windows Vista Control Panel. Please note that by doing this audio will **no longer be routed to your existing speakers**, only down the HDMI cable, until you reverse the procedure.

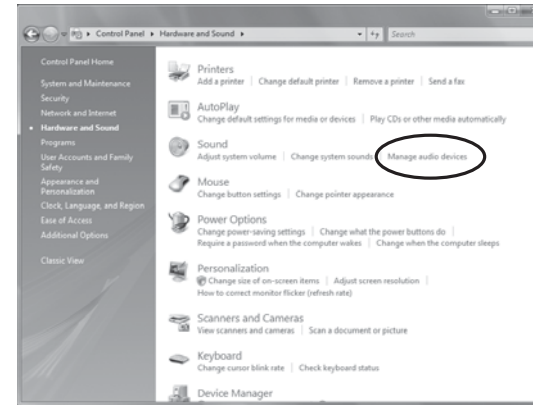
Please find below a description of what you will need to do to achieve this.



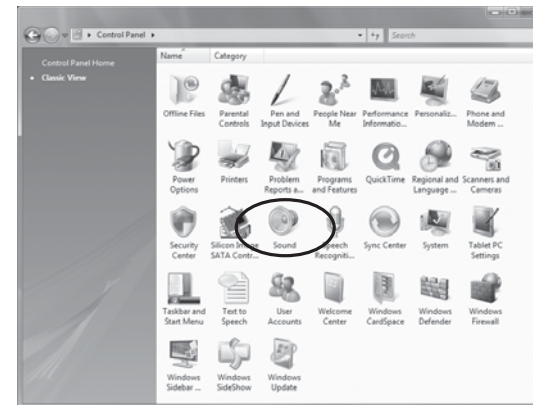
1. Click on the 'Start' button in the bottom left hand corner of your desktop and then 'Control Panel'



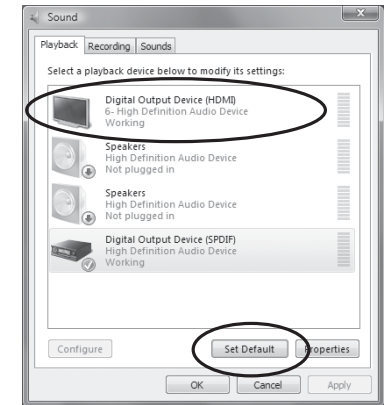
2. Depending on how you have your copy of Windows Vista set up you will either need to click on 'Hardware and Sound'



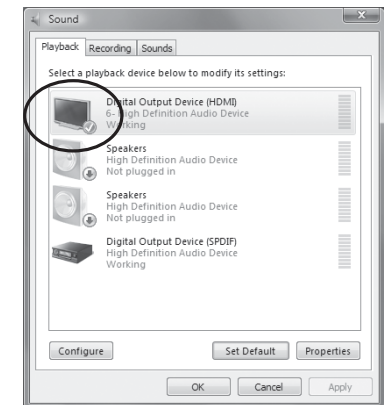
3. and then 'Manage audio devices'



4. Or double click on the 'Sound' icon if you get this 'Classic View'



5. Either way you should now get to the 'Sound' window. Click on the 'Digital Output Device (HDMI)' listing to highlight it and then click on 'Set Default' tab at the bottom.



6. There should now be a green tick mark on the 'Digital Output Device (HDMI)' listing. If this is the case please click on 'OK'

Any application that outputs audio will now need to be restarted if currently running but you will find that the audio is now routed down the HDMI cable.

Please remember that should you wish to output audio via the normal speakers in future you will need to carry out the previous procedure but set your normal audio output as the default audio device.

Important Information – Please Read !!

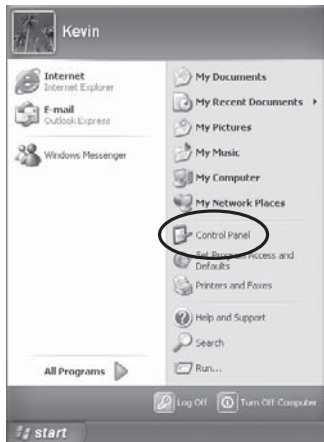
Please read this notice in its entirety if you intend to install your new **Sapphire HD2400 or HD2600 series** graphics adapter into a computer running **Windows XP** as the operating system. This notice is not applicable if you intend installing it in a computer running **Windows Vista**.

Part of the feature set of your new Sapphire graphics board is that it has an HD Audio Controller built into the board to allow you to easily and seamlessly output both video and audio via an HDMI output using the Active DVI-HDMI converter may have been included in the box.

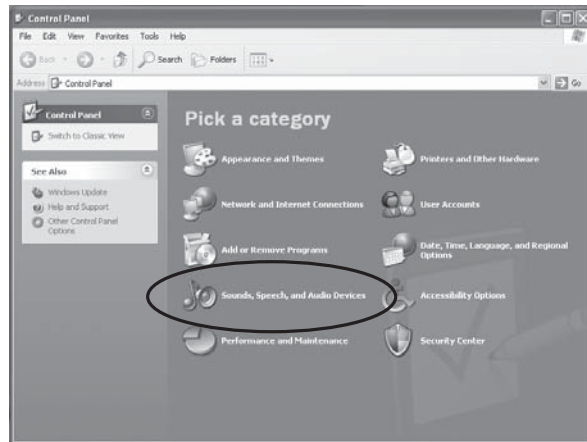
For this reason, part of the driver installation routine also installs the appropriate driver for the HD Audio Controller. The behaviour of the installation of this driver means that it automatically sets the default audio device to be the HD Audio Controller on the graphics board. Consequently, audio will no longer be routed to the normal speaker output via your previous add in sound card leading you to believe that your **audio has somehow been 'broken'** by the driver installation.

This is not the case. If you intend to use the HDMI output as your primary output and want the audio routed along the HDMI cable then you do not need to do anything further. Once you connect your HDMI display you will find the audio is also present. If you do not intend to use HDMI or only want the video to be routed via HDMI and the audio to be routed via your existing sound card output then you need to change the default audio device from the Windows XP Control Panel.

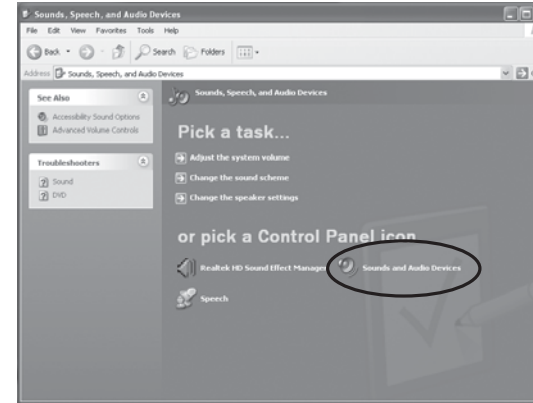
Please find below a description of what you will need to do to achieve this.



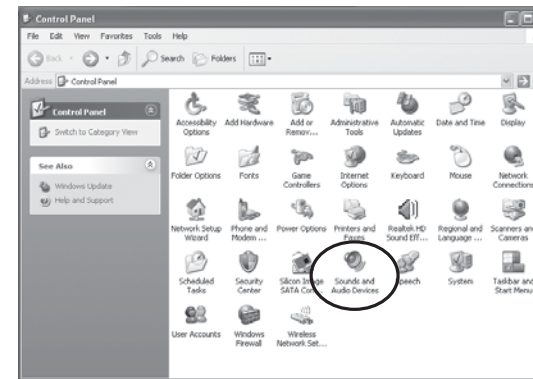
1. Click on 'Start' and then 'Control Panel' to launch the Windows XP Control Panel.



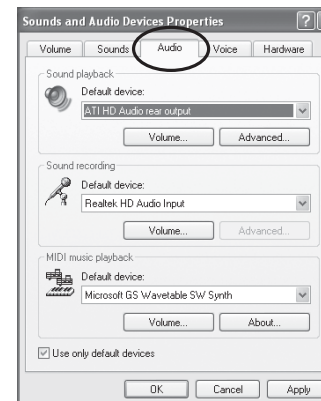
2. Depending on how you have your copy of Windows XP set up you will either need to click on 'Sounds, Speech and Audio Devices'



3. and then 'Sound and Audio Devices'



4. Or double click on 'Sounds and Audio Devices' if you get this 'Classic View'



5. Either way you should now get to the 'Sounds and Audio Devices' window. Click on the 'Audio' tab at the top.

The top section of the window refers to 'Sound Playback' This is what needs to be changed. Click in the pull down box for the 'Default device' and change it from 'ATI HD Audio rear output' (which is the HDMI output via the graphics card) to your normal sound card. There is usually only one other to choose from. Finally click on 'OK'

Any application that outputs audio will now need to be restarted but you will find that the audio is now routed from your sound card.

Should you wish to output audio via HDMI in the future, please carry out the previous procedure but choose 'ATI HD Audio rear output' as your default audio device.