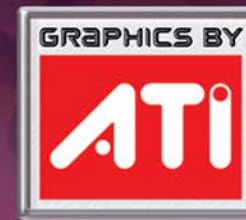




RADEON X1600 SERIES



The Absolute in Mainstream Gaming Performance!

Find yourself caught in a carnal struggle for survival on a far of world erupting with life rendered with high definition clarity and painted with vivid detail by the next generation technology of the Sapphire RADEON® X1600 Series. A tool for the performance oriented, the Sapphire X1600 Series comes equipped with the hardware muscle to deliver an entire realm of fantasy right to your desktop due in large part to the awesome feature-set of the RADEON® X1600 core, robust onboard memory configurations and 12 pipeline architecture. An impressive hardware compilation supporting CrossFire™ paired with support for Microsoft® DirectX® 9.0, Shader Model 3.0 ensures future compatibility and the advent of the ATI Avivo™ Video and Display.



PRODUCT POSITIONING
For Performance Driven Users

SAPPHIRE RADEON X1600 XT Redefining Your Reality!

- ▶ State-of-the-art 3D performance technology
- ▶ Extreme gaming with an ultra-threaded 3D architecture
- ▶ Shader Model 3.0, high dynamic range, adaptive anti-aliasing
- ▶ Avivo™ true video and display perfection on the PC
- ▶ Support HDTV, digital and analog display
- ▶ CrossFire: multiply and conquer with multi-GPU performance
- ▶ DirectX® 9.0 and Open GL® support
- ▶ 256MB memory, 128-bit memory architecture



Radeon X1600 XT



SAPPHIRE BUNDLE OPTIONS (Full Retail)

| Model | S-Video | Composite | Dongle | DVI-to-VGA | HDTV Cable | VIVO Cable | Driver CD | PowerDirector | PowerDVD | SOFTWARE SELECT SERIES |
|---------------------|---------|-----------|--------|------------|------------|------------|-----------|---------------|----------|------------------------|
| Radeon X1600 Series | ✓ | ✓ | ✓ | ✓ | ✓ | | ✓ | | ✓ | ✓ |

SAPPHIRE RADEON X1600 SERIES PRODUCT LINE UP

| Model | Memory (MB) ¹ | Bus Type ² | Core Frequency (MHz) | Memory Frequency (MHz, DDR) | Pipelines | Memory Bus (-bit) | Display Support |
|------------------|--------------------------|-----------------------|----------------------|-----------------------------|-----------|-------------------|-----------------|
| Radeon X1600 XT | 256 | PCI-E | 600 | 1400 | 12 | 128 | VGA/TVO/DVI-I |
| Radeon X1600 PRO | 128/256/512 | PCI-E | 500 | 800 | 12 | 128 | VGA/TVO/DVI-I |

* Specifications subject to change without notice.

¹ For more memory information, please contact Sapphire authorized dealers near you.

² For AGP version, please contact Sapphire authorized dealers near you.

SAPPHIRE RADEON X1600 PRO Competitive Performance!

- ▶ State-of-the-art 3D performance technology
- ▶ Extreme gaming with an ultra-threaded 3D architecture
- ▶ Shader Model 3.0, high dynamic range, adaptive anti-aliasing
- ▶ Avivo™ true video and display perfection on the PC
- ▶ Support HDTV, digital and analog display
- ▶ CrossFire: multiply and conquer with multi-GPU performance
- ▶ DirectX® 9.0 and Open GL® support
- ▶ 128/256/512 MB memory, 128-bit memory architecture

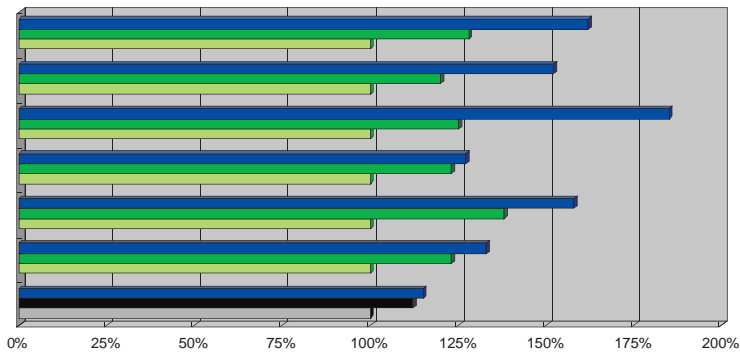


Radeon X1600 PRO





Radeon X1600 PRO



| 2D DISPLAY MODES | |
|--|-----|
| Resolutions, colors and maximum refresh rates (Hz) in 256, 65K or 16.7M colors | |
| Monitor Resolution | Hz |
| | 200 |
| | 200 |
| | 200 |
| | 200 |
| | 160 |
| | 120 |
| | 120 |
| | 100 |
| | 90 |
| | 85 |
| | 60 |

| MAXIMUM 3D RESOLUTIONS | |
|------------------------|-----------|
| 65K colors | 2048x1536 |
| 16.7M colors | 2048x1536 |
| 1.07 billion colors | 2560x1600 |

NOTE: resolutions are limited by the performance of the attached monitor.

* 16:9 aspect ratio monitors are supported on 1920X1080 and 848X480 on Windows® XP, Windows® 2000, and Windows® ME. The complete list of resolutions depends on the driver version and operating system.